



**PODER JUDICIÁRIO**  
ESTADO DO RIO DE JANEIRO

## **RESUMO DO DEMONSTRATIVO DA DESPESA COM PESSOAL TRIBUNAIS DE JUSTIÇA DOS ESTADOS**

**SECRETARIA-GERAL DE PLANEJAMENTO, COORDENAÇÃO E FINANÇAS  
ASSESSORIA DE PROJEÇÕES, ANÁLISES E PARECERES ECONÔMICO-FINANCEIROS**

**3º Quadrimestre - 2023**

# TRIBUNAL DE JUSTIÇA DO ESTADO DO RIO DE JANEIRO

## RESUMO DO DEMONSTRATIVO DA DESPESA COM PESSOAL 2023

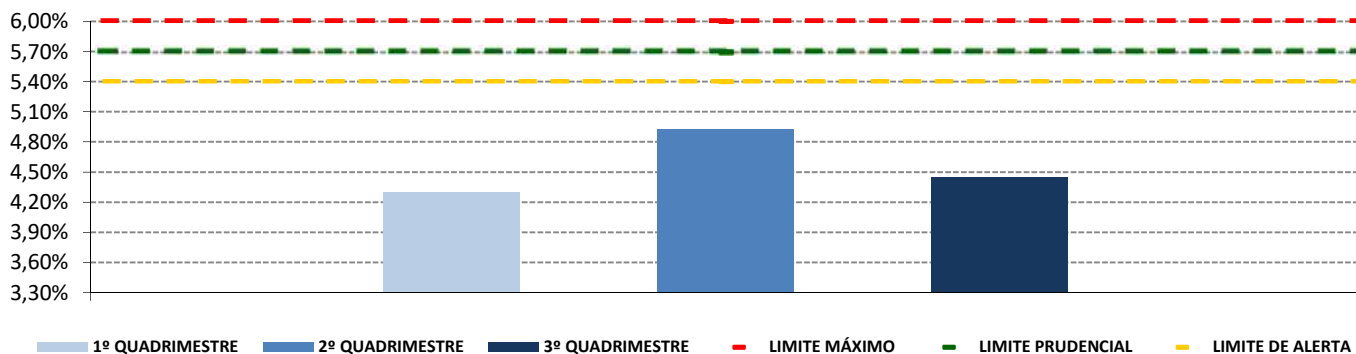
Valores em R\$

1º QUADRIMESTRE - MAIO/2022 A ABRIL/2023	
Receita Corrente Líquida (RCL)	88.124.953.387
Despesa Líquida com Pessoal (DLP)	3.793.376.880
<b>% sobre a RCL</b>	<b>4,30%</b>

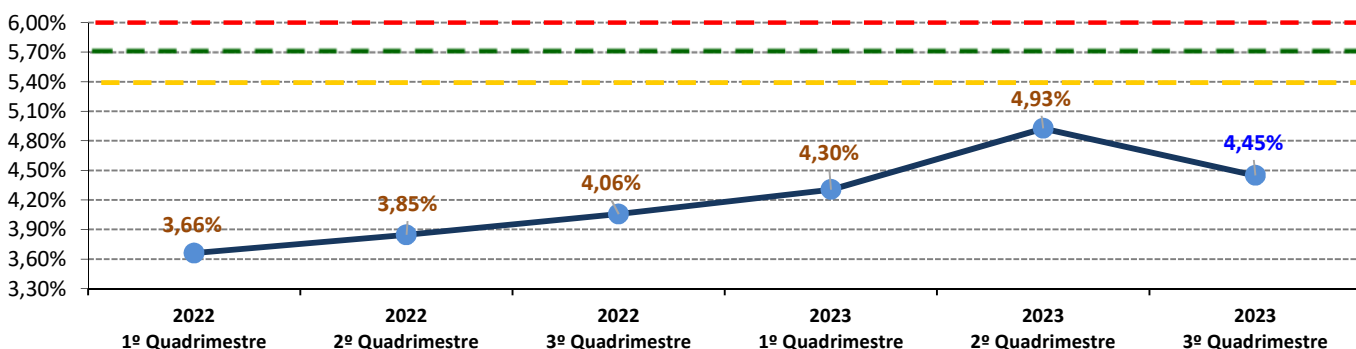
2º QUADRIMESTRE - SET/2022 A AGO/2023	
Receita Corrente Líquida (RCL)	84.873.412.855
Despesa Líquida com Pessoal (DLP)	4.180.151.111
<b>% sobre a RCL</b>	<b>4,93%</b>

3º QUADRIMESTRE - JAN/2023 A DEZ/2023	
Receita Corrente Líquida (RCL)	88.174.564.730
Despesa Líquida com Pessoal (DLP)	3.921.943.703
<b>% sobre a RCL</b>	<b>4,45%</b>

TJRJ- % de Gastos com Pessoal (DLP/RCL) por Quadrimestre - 2023



TJRJ - Evolução do % de Gastos com Pessoal (DLP/RCL) por Quadrimestre - 2022/2023



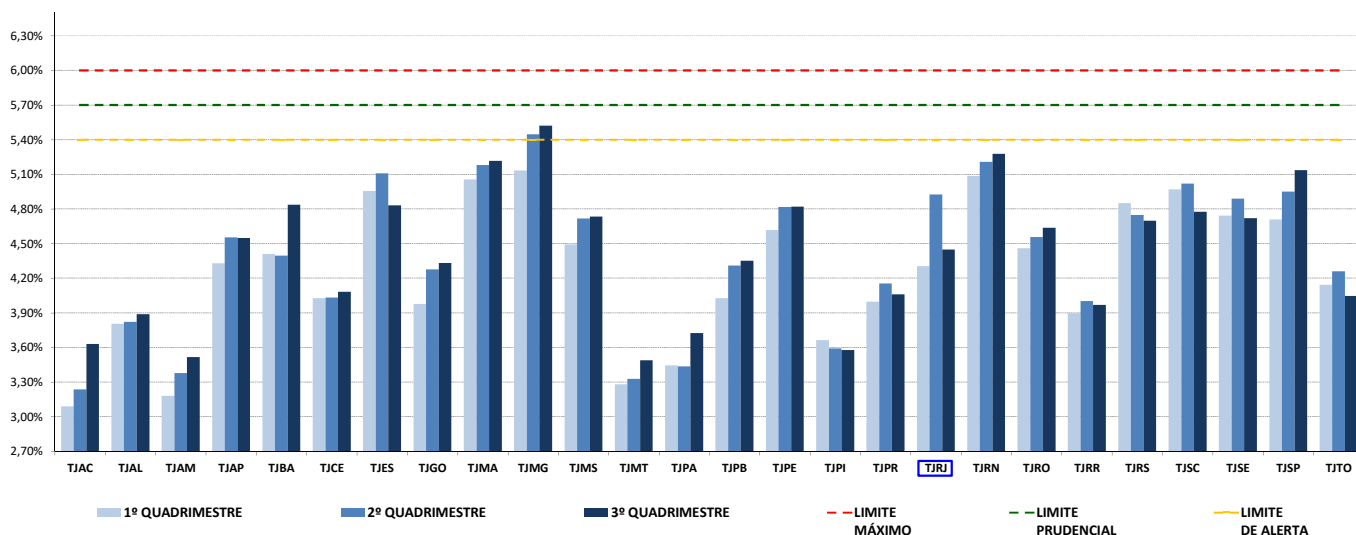
## TRIBUNAIS DE JUSTIÇA DOS ESTADOS

### RECEITA CORRENTE LÍQUIDA (RCL), DESPESA LÍQUIDA COM PESSOAL (DLP) E PERCENTUAL DE GASTOS COM PESSOAL (DLP/RCL) 2023

Valores em R\$

2023	1º QUADRIMESTRE			2º QUADRIMESTRE			3º QUADRIMESTRE		
	TJ ESTADUAIS	RCL	DLP	% (DLP/RCL)	RCL	DLP	% (DLP/RCL)	RCL	DLP
TJAC	8.084.753.254	249.809.796	3,09%	8.154.262.906	263.847.894	3,24%	8.496.046.337	308.476.578	3,63%
TJAL	13.558.733.900	515.980.177	3,81%	13.786.997.940	526.991.519	3,82%	14.360.996.245	558.309.769	3,89%
TJAM	22.651.941.010	720.512.766	3,18%	22.534.448.662	761.166.813	3,38%	22.714.039.476	798.481.548	3,52%
TJAP	7.472.908.648	323.513.405	4,33%	7.539.938.520	343.405.549	4,55%	7.985.829.178	363.169.427	4,55%
TJBA	55.663.909.152	2.454.627.891	4,41%	58.983.617.531	2.592.444.125	4,40%	57.104.634.776	2.762.462.439	4,84%
TJCE	30.572.019.922	1.230.589.095	4,03%	31.033.187.715	1.251.217.237	4,03%	31.881.281.766	1.301.412.380	4,08%
TJES	21.095.298.795	1.045.148.234	4,95%	20.934.919.938	1.069.103.926	5,11%	22.306.473.323	1.077.271.330	4,83%
TJGO	37.852.910.695	1.505.411.910	3,98%	36.617.727.902	1.565.861.671	4,28%	38.364.025.885	1.662.140.134	4,33%
TJMA	22.456.262.019	1.135.315.970	5,06%	22.672.627.862	1.174.406.580	5,18%	23.037.993.207	1.201.961.742	5,22%
TJMG	91.598.747.603	4.701.756.559	5,13%	90.994.663.455	4.955.084.344	5,45%	91.978.749.210	5.077.414.675	5,52%
TJMS	19.035.100.721	855.319.847	4,49%	18.978.270.735	895.250.415	4,72%	19.682.982.860	931.491.078	4,73%
TJMT	29.525.635.382	968.949.059	3,28%	29.364.809.706	976.882.405	3,33%	30.863.753.729	1.076.350.147	3,49%
TJPA	34.006.969.737	1.171.090.342	3,44%	34.905.328.933	1.199.637.912	3,44%	36.069.091.339	1.343.279.757	3,72%
TJPB	16.048.213.256	645.955.240	4,03%	16.266.161.275	701.186.070	4,31%	16.766.613.328	729.615.763	4,35%
TJPE	37.430.905.854	1.727.981.906	4,62%	37.120.328.012	1.788.385.077	4,82%	37.789.672.694	1.821.459.529	4,82%
TJPI	13.888.522.172	508.794.394	3,66%	14.517.435.781	521.459.577	3,59%	15.352.560.355	549.192.000	3,58%
TJPR	55.257.014.815	2.208.373.780	4,00%	56.101.214.673	2.330.030.509	4,15%	59.507.658.941	2.416.147.992	4,06%
<b>TJRJ</b>	<b>88.124.953.387</b>	<b>3.793.376.880</b>	<b>4,30%</b>	<b>84.873.412.855</b>	<b>4.180.151.111</b>	<b>4,93%</b>	<b>88.174.564.730</b>	<b>3.921.943.703</b>	<b>4,45%</b>
TJRN	14.435.639.413	734.105.868	5,09%	14.760.387.903	768.610.638	5,21%	16.182.632.436	853.893.139	5,28%
TJRO	11.751.863.273	524.056.001	4,46%	11.886.267.029	541.535.127	4,56%	12.525.048.293	580.836.772	4,64%
TJRR	6.472.474.574	252.086.416	3,89%	6.397.751.558	256.026.987	4,00%	6.818.343.049	270.572.073	3,97%
TJRS	50.802.551.732	2.464.331.996	4,85%	53.031.803.577	2.517.610.877	4,75%	56.486.501.147	2.653.381.773	4,70%
TJSC	37.915.694.303	1.884.642.312	4,97%	38.853.429.312	1.949.894.581	5,02%	41.002.835.819	1.957.511.392	4,77%
TJSE	11.604.465.961	550.225.806	4,74%	11.765.578.864	575.192.195	4,89%	12.555.098.860	592.723.539	4,72%
TJSP	232.910.685.399	10.968.695.672	4,71%	230.429.464.666	11.406.921.472	4,95%	229.187.318.031	11.770.923.874	5,14%
TJTO	12.482.431.453	516.996.852	4,14%	12.605.767.150	536.857.048	4,26%	12.991.895.148	525.640.828	4,05%

TJ Estados - % de Gastos com Pessoal (DLP/RCL) 1º, 2º e 3º Quadrimestres- 2023



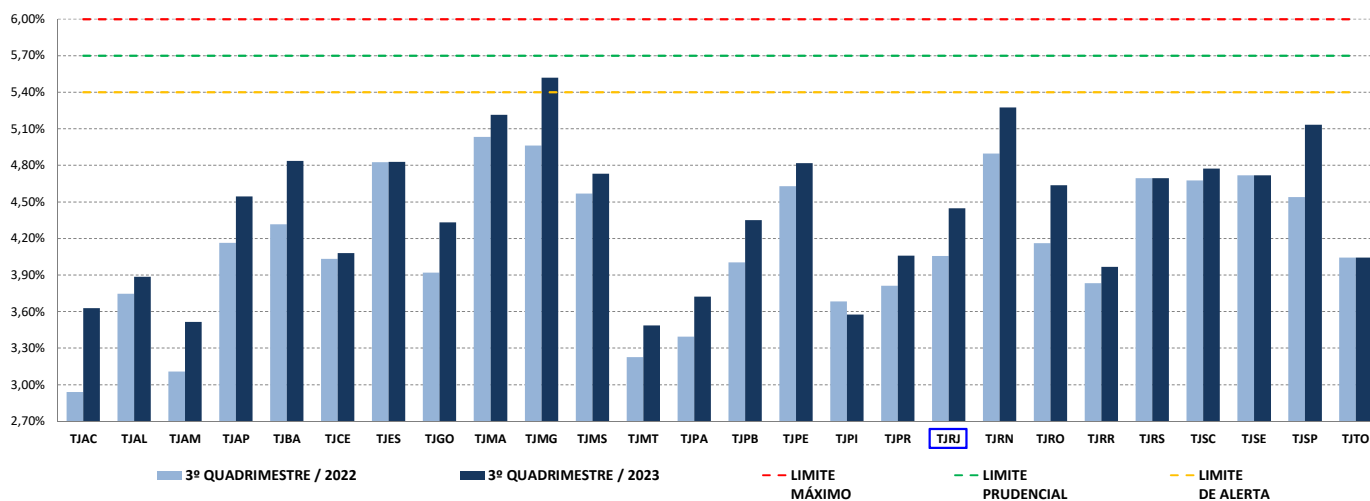
# TRIBUNAIS DE JUSTIÇA DOS ESTADOS

## VARIÇÃO DA RECEITA CORRENTE LÍQUIDA (RCL), DESPESA LÍQUIDA COM PESSOAL (DLP) E PERCENTUAL DE GASTOS COM PESSOAL (DLP/RCL) 2022 / 2023

Valores em R\$

QUAD./ANO	3º QUADRIMESTRE / 2022			3º QUADRIMESTRE / 2023			% DE VARIAÇÃO ENTRE 2022 E 2023			
TJ ESTADUAIS	RCL	DLP	% (DLP/RCL)	RCL	DLP	% (DLP/RCL)	RCL	DLP		
TJAC	7.968.319.334	234.433.017	2,94%	8.496.046.337	308.476.578	3,63%	6,62%	↑	31,58%	↑
TJAL	13.148.926.097	492.740.999	3,75%	14.360.996.245	558.309.769	3,89%	9,22%	↑	13,31%	↑
TJAM	22.412.466.141	697.045.598	3,11%	22.714.039.476	798.481.548	3,52%	1,35%	↑	14,55%	↑
TJAP	7.242.022.583	301.652.377	4,17%	7.985.829.178	363.169.427	4,55%	10,27%	↑	20,39%	↑
TJBA	55.298.488.312	2.387.727.159	4,32%	57.104.634.776	2.762.462.439	4,84%	3,27%	↑	15,69%	↑
TJCE	30.275.603.634	1.221.166.993	4,03%	31.881.281.766	1.301.412.380	4,08%	5,30%	↑	6,57%	↑
TJES	21.193.712.380	1.023.262.813	4,83%	22.306.473.323	1.077.271.330	4,83%	5,25%	↑	5,28%	↑
TJGO	37.199.050.718	1.458.446.724	3,92%	38.364.025.885	1.662.140.134	4,33%	3,13%	↑	13,97%	↑
TJMA	22.134.638.694	1.114.359.180	5,03%	23.037.993.207	1.201.961.742	5,22%	4,08%	↑	7,86%	↑
TJMG	91.403.876.913	4.536.972.487	4,96%	91.978.749.210	5.077.414.675	5,52%	0,63%	↑	11,91%	↑
TJMS	18.352.650.109	838.880.114	4,57%	19.682.982.860	931.491.078	4,73%	7,25%	↑	11,04%	↑
TJMT	29.286.462.391	945.250.597	3,23%	30.863.753.729	1.076.350.147	3,49%	5,39%	↑	13,87%	↑
TJPA	34.198.301.843	1.161.391.044	3,40%	36.069.091.339	1.343.279.757	3,72%	5,47%	↑	15,66%	↑
TJPB	15.758.982.577	631.337.206	4,01%	16.766.613.328	729.615.763	4,35%	6,39%	↑	15,57%	↑
TJPE	36.697.903.275	1.699.268.765	4,63%	37.789.672.694	1.821.459.529	4,82%	2,98%	↑	7,19%	↑
TJPI	13.495.207.706	497.316.610	3,69%	15.352.560.355	549.192.000	3,58%	13,76%	↑	10,43%	↑
TJPR	55.743.548.179	2.125.184.552	3,81%	59.507.658.941	2.416.147.992	4,06%	6,75%	↑	13,69%	↑
<b>TJRJ</b>	<b>89.631.905.200</b>	<b>3.635.905.899</b>	<b>4,06%</b>	<b>88.174.564.730</b>	<b>3.921.943.703</b>	<b>4,45%</b>	<b>-1,63%</b>	<b>↓</b>	<b>7,87%</b>	<b>↑</b>
TJRN	14.229.966.853	696.928.811	4,90%	16.182.632.436	853.893.139	5,28%	13,72%	↑	22,52%	↑
TJRO	11.597.477.036	482.676.335	4,16%	12.525.048.293	580.836.772	4,64%	8,00%	↑	20,34%	↑
TJRR	6.374.313.024	244.466.490	3,84%	6.818.343.049	270.572.073	3,97%	6,97%	↑	10,68%	↑
TJRS	50.491.712.053	2.371.706.586	4,70%	56.486.501.147	2.653.381.773	4,70%	11,87%	↑	11,88%	↑
TJSC	38.223.585.411	1.788.331.895	4,68%	41.002.835.819	1.957.511.392	4,77%	7,27%	↑	9,46%	↑
TJSE	11.266.509.996	531.830.332	4,72%	12.555.098.860	592.723.539	4,72%	11,44%	↑	11,45%	↑
TJSP	230.734.876.013	10.475.446.728	4,54%	229.187.318.031	11.770.923.874	5,14%	-0,67%	↓	12,37%	↑
TJTO	12.104.467.859	489.693.874	4,05%	12.991.895.148	525.640.828	4,05%	7,33%	↑	7,34%	↑

**TJ Estados - % de Gastos com Pessoal (DLP/RCL no 3º Quadrimestre - 2022/2023)**



# TRIBUNAIS DE JUSTIÇA DOS ESTADOS

## RANKING DO PERCENTUAL DE GASTOS COM PESSOAL (DLP/RCL) POR QUADRIMESTRE / 2023

Valores em R\$

2023			3º QUADRIMESTRE / 2023				
▲ RANKING POR %			3º QUADRIMESTRE				RANKING - 3º QUADRIMESTRE PERCENTUAL DE GASTOS COM PESSOAL (DLP/RCL)
2º Quad./2023		3º Quad./2023	TJ ESTADUAIS		RCL		
ORDEM	% (DLP/RCL)	ORDEM	DLP	%	(DLP/RCL)		
1º	5,45%	1º	TJMG	91.978.749.210	5.077.414.675	5,52%	TJMG 5,52%
2º	5,21%	2º	TJRN	16.182.632.436	853.893.139	5,28%	TJRN 5,28%
3º	5,18%	3º	TJMA	23.037.993.207	1.201.961.742	5,22%	TJMA 5,22%
6º	4,95%	4º	TJSP	229.187.318.031	11.770.923.874	5,14%	TJSP 5,14%
14º	4,40%	5º	TJBA	57.104.634.776	2.762.462.439	4,84%	TJBA 4,84%
4º	5,11%	6º	TJES	22.306.473.323	1.077.271.330	4,83%	TJES 4,83%
9º	4,82%	7º	TJPE	37.789.672.694	1.821.459.529	4,82%	TJPE 4,82%
5º	5,02%	8º	TJSC	41.002.835.819	1.957.511.392	4,77%	TJSC 4,77%
11º	4,72%	9º	TJMS	19.682.982.860	931.491.078	4,73%	TJMS 4,73%
8º	4,89%	10º	TJSE	12.555.098.860	592.723.539	4,72%	TJSE 4,72%
10º	4,75%	11º	TJRS	56.486.501.147	2.653.381.773	4,70%	TJRS 4,70%
12º	4,56%	12º	TJRO	12.525.048.293	580.836.772	4,64%	TJRO 4,64%
13º	4,55%	13º	TJAP	7.985.829.178	363.169.427	4,55%	TJAP 4,55%
7º	4,93%	14º	<b>TJRJ</b>	<b>88.174.564.730</b>	<b>3.921.943.703</b>	<b>4,45%</b>	<b>TJRJ 4,45%</b>
15º	4,31%	15º	TJPB	16.766.613.328	729.615.763	4,35%	TJPB 4,35%
16º	4,28%	16º	TJGO	38.364.025.885	1.662.140.134	4,33%	TJGO 4,33%
19º	4,03%	17º	TJCE	31.881.281.766	1.301.412.380	4,08%	TJCE 4,08%
18º	4,15%	18º	TJPR	59.507.658.941	2.416.147.992	4,06%	TJPR 4,06%
17º	4,26%	19º	TJTO	12.991.895.148	525.640.828	4,05%	TJTO 4,05%
20º	4,00%	20º	TJRR	6.818.343.049	270.572.073	3,97%	TJRR 3,97%
21º	3,82%	21º	TJAL	14.360.996.245	558.309.769	3,89%	TJAL 3,89%
23º	3,44%	22º	TJPA	36.069.091.339	1.343.279.757	3,72%	TJPA 3,72%
26º	3,24%	23º	TJAC	8.496.046.337	308.476.578	3,63%	TJAC 3,63%
22º	3,59%	24º	TJPI	15.352.560.355	549.192.000	3,58%	TJPI 3,58%
24º	3,38%	25º	TJAM	22.714.039.476	798.481.548	3,52%	TJAM 3,52%
25º	3,33%	26º	TJMT	30.863.753.729	1.076.350.147	3,49%	TJMT 3,49%